



Transport Access Program

Kingswood Station Upgrade

Community Notification

August 2019

Project update

During July, NAIDOC celebrations were held at Kingswood station, with morning and afternoon tea shared which included jams and preserves made from native Australian ingredients such as Quandong fruit and Lily Pilli with damper.

Work completed in July includes:

- completion of piling work on Park Avenue
- installation of structural steel lift shafts and glass panels on the Park Avenue and Great Western Highway



NAIDOC morning tea

Work planned for August

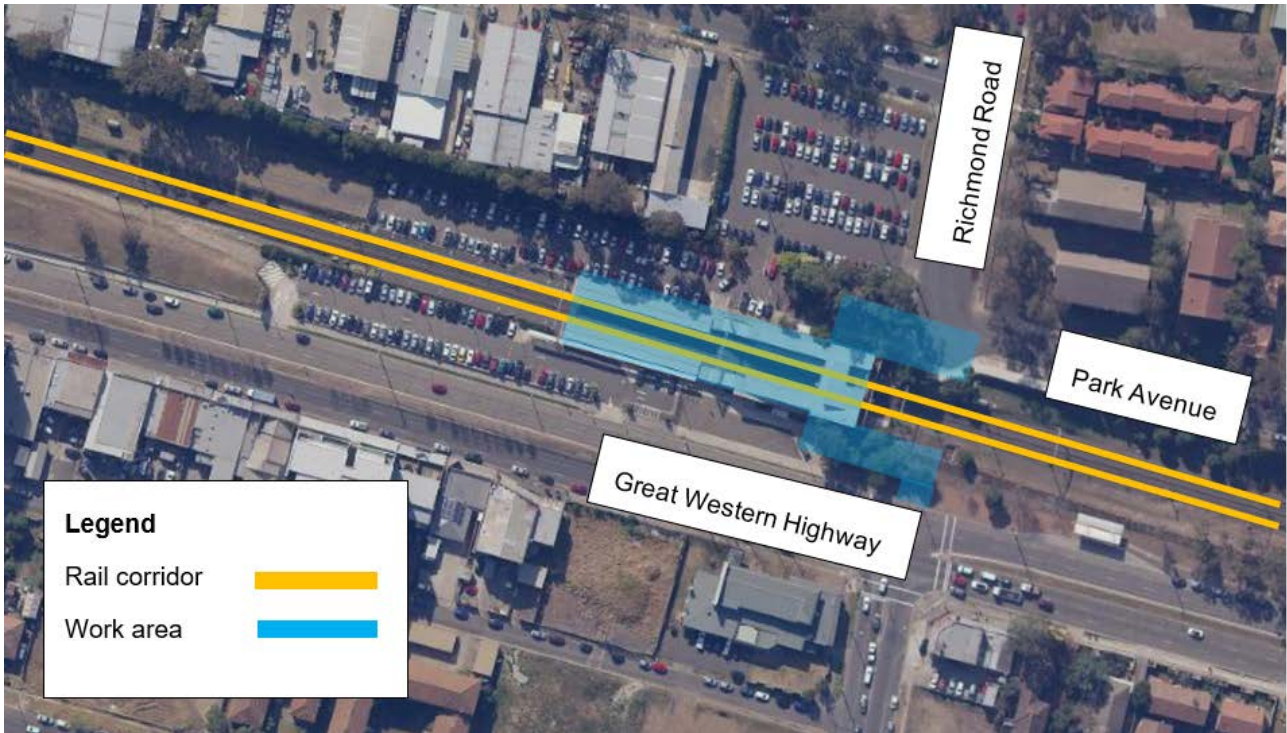
- piling and concrete work on the Great Western Highway side of the station
- continuation of station building modifications and work on concourse
- concrete work to new stairs, landings and ground level on the Great Western Highway side of the station
- installation of structural steel and roofing on concourse
- roadwork on both sides of the station under local traffic control
- the station toilets will remain closed until late August 2019 to allow upgrade work to continue

Please refer to map on the overleaf.



Park Avenue lift structure with new glass panels

Work area at Kingswood Station



Standard working hours

Standard work hours are between **7am to 6pm, Monday to Friday and 8am to 1pm Saturdays**. We will continue to inform the community ahead of any work outside of standard work hours. We understand upgrades to the station can bring some inconvenience during construction and thank you for your patience during this time.

Delivered by Downer EDI Work



This document contains important information about public transport projects in your area. If you require the services of an interpreter, please contact the Translating and Interpreting Service on **131 450** and ask them to call Transport for NSW on **(02) 9200 0200**. The interpreter will then assist you with translation.

Punjabi

ਇਸ ਦਸਤਾਵੇਜ਼ ਵਿੱਚ ਤੁਹਾਡੇ ਇਲਾਕੇ ਦੇ ਅੰਦਰ ਚਲ ਰਹੀਆਂ ਜਣਤਕ ਆਵਾਜਾਈ ਦੀਆਂ ਯੋਜਨਾਵਾਂ (public transport projects) ਦੇ ਬਾਰੇ ਮਹੱਤਵਪੂਰਨ ਜਾਣਕਾਰੀ ਹੈ। ਜੇ ਤੁਹਾਨੂੰ ਦੁਭਾਸ਼ਿਏ ਦੀਆਂ ਸੇਵਾਵਾਂ ਦੀ ਜ਼ਰੂਰਤ ਹੈ, ਤਾਂ ਕਿਰਪਾ ਕਰ ਕੇ ਅਨੁਵਾਦ ਅਤੇ ਦੁਭਾਸ਼ਿਆ ਸੇਵਾ ਨੂੰ 131 450 ਤੇ ਸੰਪਰਕ ਕਰੋ ਅਤੇ ਉਨ੍ਹਾਂ ਨੂੰ ਕਹੋ ਕਿ ਟ੍ਰਾਂਸਪੋਰਟ ਫਾਰ NSW (Transport for NSW) ਨੂੰ (02) 9200 0200 ਤੇ ਸੰਪਰਕ ਕਰਨ। ਦੁਭਾਸ਼ਿਆ ਇਸ ਤੋਂ ਬਾਅਦ ਫਿਰ ਅਨੁਵਾਦ ਵਿੱਚ ਤੁਹਾਡੀ ਮਦਦ ਕਰੇਗਾ।

Chinese

这份文件包含你所在地区公共交通工程项目的重要信息。如果你需要传译服务，请致电翻译与传译服务机构，电话 131 450，要求他们为你接通交通部(Transport for NSW)，电话是 (02) 9200 0200。传译员会为你做翻译。