



Guidelines for Week 3

Students transitioning to On-Campus Teaching and Learning



St Dominic's College is committed to quality education while maintaining the highest levels of hygiene and sanitisation. Therefore, the following measures will be in place for all staff and students.

The College continues to remain open for those students requiring supervision i.e. beyond the year group scheduled to transition to on-campus teaching and learning. These students will be supervised in the ERLC for the day with alternate break times to the rest of the College.

Arrival to St Dominic's

- Temperature will be taken, and hand sanitiser will be provided to be used at entry.
- Students will be provided with a daily organisation sheet with their modified timetable including room allocation to ensure physical distancing can be exercised.
- Students will be directed to the main yard, exercising 'physical' distancing.
- Students will be briefed (in the main yard) at 8:45 a.m. on the health and safety measures prior to the commencement of classes.

Throughout the day

- Students are required to bring their headphones in the event of joining a MS Teams meeting, if required.
- Students are to exercise 'physical' distancing within shared spaces including classrooms, recess and lunch areas as instructed by their teachers.
- Movement around the College will be restricted and provisions in place to minimise congestion (Please refer to Appendix A: College Directional Map).
- Modified timetables have been developed to allow courses an opportunity for a face-to-face lesson, where possible (Please refer to Appendix B: Modified Timetables).
- Classrooms have been allocated with respect to class sizes e.g. 20 students across C101/C102, 30 students C203 – C206, Br P. A. Treacy Centre, GKSSH etc.
- Movement around the College will be restricted and provisions in place to minimise congestion
- Regular washing or sanitising of hands is encouraged.
- Modified Bell Times have been scheduled to allow the opportunity for all courses to have a face-to-face lesson (Please refer to Appendix C: Modified Bell Times).

Recess and Lunch Breaks

- No canteen facilities are available on any day throughout Week 3.
- The ERLC, Ovals and Basketball Courts will remain closed.
- Students are to remain onsite in designated areas:
 - a. Stage 6 – Oval Banks, Main Yard and undercover area between A and B Block
 - b. Stages 4 & 5 have designated House areas:

Dharuk	–	Main Yard (ERLC)
Rice	–	Main Yard (C-Block)
Surawski	–	Oval Banks
Tench	–	Chapel Yard / Undercroft area

Conclusion of the Day

- Students requiring bus transport home will have normal bus supervision.
- Each day the students will wait in the bus shelter areas on Gascoigne and Copeland Streets.
- The Student Drop Off lane is available however parents are reminded they must remain in their vehicles.

Cleaning the College

- Thorough cleaning of the College will take place at the end of each day. Specifically, the classrooms used throughout the timetable lessons and all amenities.

Phase 3 – Teaching and Learning

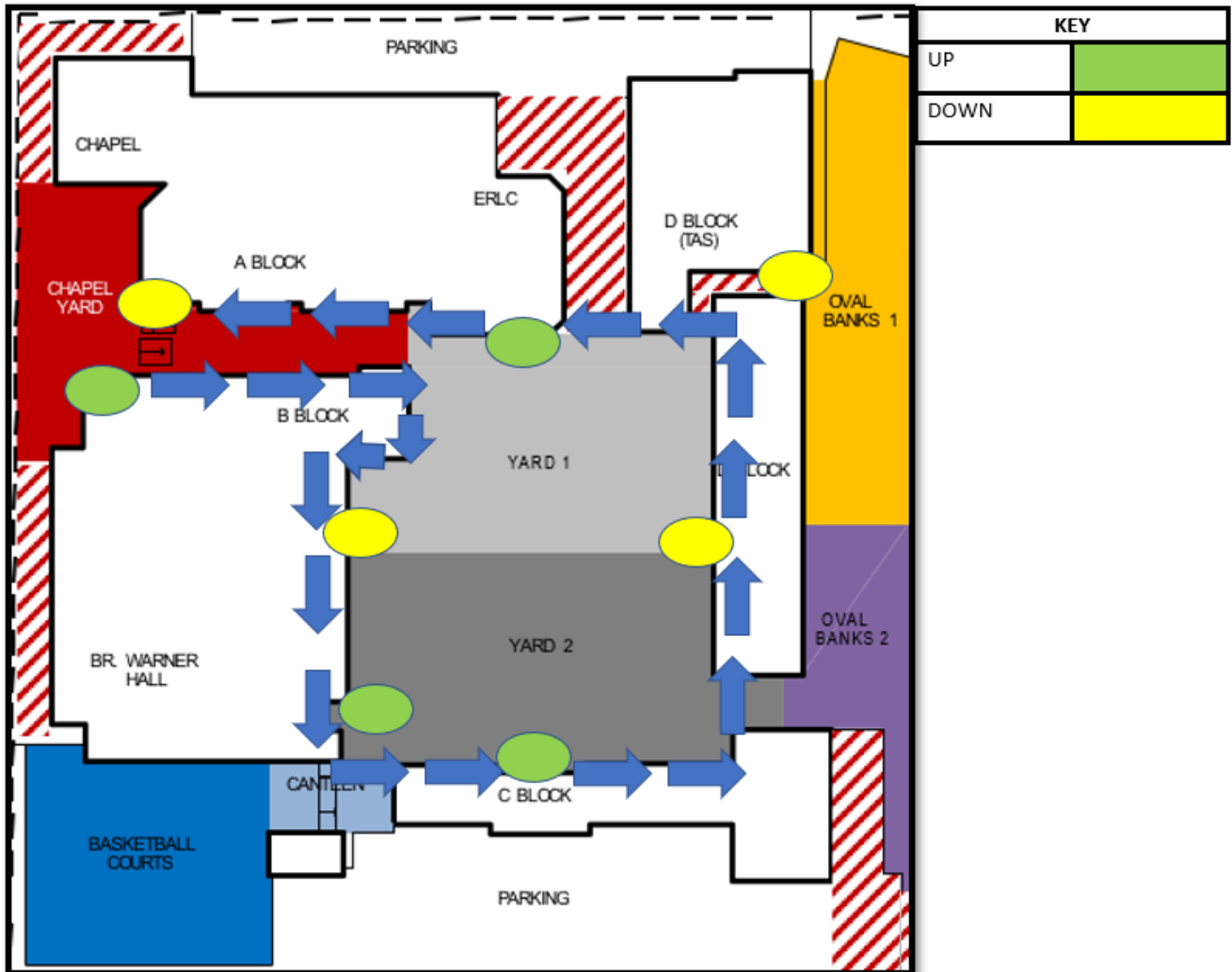
Scheduled days at school for students

- Each Year group will initially have ONE day per week onsite at school.
- Face-to-face teaching will be the single mode of delivery on these days.
- Students are expected to attend on the scheduled day and their attendance will be recorded.
- For students who are unable to attend for health or family reasons, parents will need to contact the Front Office to inform the College of the absence.
- Teachers will publish a brief lesson outline on Canvas for those students who cannot attend school on their scheduled day. It will be the student's responsibility to complete set work.
- Teachers may continue with an online lesson, as outlined in Phase 2, and/or use this opportunity to assist individual students 1:1, follow-up on previous assigned work or continue their lesson sequencing.

Appendix A: College Directional Map

MOVEMENT ALONG GROUND AND FIRST FLOOR

MOVEMENT UP AND DOWN STAIRWELLS



Appendix B: Modified Timetables

St Dominic's College

	PERIOD 1		PERIOD 2		PERIOD 3		PERIOD 4		PERIOD 5		P6 30 min		P6 30 min	
12	12EGAA	MCSC	12CHEA	EDWF	12MATA	GERD	12CONB	HALB	12ANHA	STRH	12SR2A	TURM	12SR2A	TURM
	12EGAB	FOGB	12CONA	HALB	12MATB	WALB	12BSTB	SHAW	12BIOA	LALR	12SR1A	CULZ	12SR1C	CULZ
	12EGSA	LEVM	12DTCA	KROT	12MST2A	MEEC	12ENSA	KROE	12HOSA	SHAN	12SR1B	MACD	12CATB	HICC
	12EGSB	TORJ	12EOCA	MCKJ	12MST2B	LUIN	12PHYA	WAYM	12PDHC	PEAR	12CATA	HICC	12MX1A	GERD
	12EGSC	MAGP	12LGSA	REIR	12MST1A	MCKD	12MHSA	LAWD	12ITMA	WILA	12CAPA	GATJ	12PV1A	LEWS
	12ESTA	VRLD	12MU1A	EDEV	12MST1B	GEEJ	12VARA	LEWS	12ITTA	EAST	12SL1A	VERJ	12STUC	HOME
		12BSTA	BIRB	12STUA	HAZS	12FTCA	MONN	12ITTB	GATJ	12EX1A	MCSC			
		12WKSA	DARM			12WKSB	RAWB	12JABA	AMOD	12STUB	HAZS			
		12PDHA	JANB			12STUE	HAZS	12STUF						
		12PDHB	BORL											
		12STUD	HAZS											
	PERIOD 1		PERIOD 2		PERIOD 3		PERIOD 4		P5 30 min		P5 30 min		PERIOD 6	
11	11ANHA	HALJ	11EGAA	MAGP	11BIOA	LISD	11MATA	GEEJ	11SR2A	SIMR	11SR2A	SIMR	11BSTA	MCKJ
	11CHEA	EDWF	11EGAB	TORJ	11BSTB	BIRB	11MATB	CHAA	11SR1C	CULZ	11SR1A	REIR	11CAFA	COOC
	11CONA	KROT	11EGSA	DSOD	11BSTC	LAWD	11MSTA	MEEC	11SR1D	HALJ	11SR1B	TURM	11CONB	KROT
	11DRAA	EDEV	11EGSB	VRLD	11DTCA	ZAMN	11MSTB	LUIN	11SICB	HICC	11SICA	HICC	11ENSA	KROE
	11FTCA	SHAN	11EGSC	MCSC	11GEOA	RAWB	11MSTC	BU CJ	11MX1A	GEEJ	11EX1A	TORJ	11EEOA	REIR
	11INSA	TAHM	11ESTA	ANGK	11ITBA	BALU	11MSTD	PASJ	11SL1C	VERJ	11SL1A	VERJ	11HOSA	MONN
	11LGSA	RIMD	11ESTB	ATKR	11ITCA	BALU	11MSTE	NAIJ	11SL1D	MACD	11SL1B	BOUJ	11ITTA	EAST
	11PDHA	KILJ			11MU1A	WILC					11PV1A	COLD	11ITMA	WILA
	11SPCA	CHUK			11PDHB	MACD							11MHSA	FOGB
	11STUD	HAZS			11PDHC	CHUK							11PHYA	GODB
					11WKSA	RIMD								
					11STUF	HAZS								

Y10	PERIOD 1		PERIOD 2		PERIOD 3		PERIOD 4		PERIOD 5		PERIOD 6		PERIOD 7		PERIOD 8			
O I N N - D C U A C M P I U O N	9:00	9:40	9:40	10:20	10:20	11:00	11:20	12:00	12:00	12:40	12:40	1:20	1:40	2:20	2:20	3:00		
	10HISA	STRH	10ENGA	TORJ	10M53A	GEEJ	10SCIA	LALR	10RELA	COOC	10PDHA	JANB	10ITAA	BALU	10STEM	ZAMN		
	10HISB	LAWD	10ENGB	VRLD	10M52A	PASJ	10SCIB	WAYM	10RELB	KENS	10PDHB	BORL	10CCMC	SHAW	10COMA	REIR		
	10HISC	ATKR	10ENGC	ANGK	10M52B	CHAA	10SCIC	KROE	10PDHC	MACD	10RELC	BOUJ	10JAPA	AMOD	10HEA	LEVM		
	10HISD	RAWB	10ENGD	MAGP	10M52C	GERD	10SCID	EDWF	10RELD	TURM	10PDHD	KILJ	10PASC	CHUK	10TEA	GATJ		
			10ENGE	DAYM									10ITTB	EAST	10ITTA	MCGS		
			10ENGD	MAGP									10PASS	KENS	10PASA	VERJ		
			10SCIE	LISD	HSIE	BIRB	10ENGE	QUIA	10PDHE	PEAR	10RELE	DARM	10ISTA	ZAMN	10VARA	KNOJ		
			10SCIF	GODB	10HISF	REIR	10ENGF	VRLD	10RELF	DARM	10PDHF	PEAR	10MUSA	HINL	10ITMA	WILA		
			10SCIG	SEIM	10HSIG	HALJ	10ENGG	LEVM	10PDHG	KILJ	10RELG	THOC	10FTCB	MONN	10FTCA	SHAN		
		10SCIH	LALR	10HSIH	STRH	10ENGH	MCSC	10SCIH	SEIM	10PDHH	MACD	10PDMA	COLD	10COMB	BIRB			
Y9	PERIOD 1		PERIOD 2		PERIOD 3		PERIOD 4		PERIOD 5		PERIOD 6		PERIOD 7		PERIOD 8			
O I N N - D C U A C M P I U O N	9:00	9:40	9:40	10:20	10:20	11:00	11:20	12:00	12:00	12:40	12:40	1:20	1:40	2:20	2:20	3:00		
	9ENGA	STAB	9HISA	ROBM	9M53A	LUIN	9SCIA	WAYG	9PDHA	PEAR	9RELA	DARM	9ITAA	BALU	9JAPA	AMOD		
	9ENGB	MAGP	9HISB	SHAW	9M52A	MEEC	9SCIB	TAHM	9RELB	DARM	9PDHB	VERJ	9COMC	LAWD	9COMA	SHAW		
	9ENGC	LEVM	9HISC	STRH	9M52B	BU CJ	9SCIC	SEIM	9PDHC	VERJ	9RELC	COOC	9VARA	LEWS	9COMC	RIMD		
	9ENGD	ANGK	9HISD	ATKR	9M52C	CHAA	9SCID	LISD	9RELD	KENS	9PDHD	MACD	9ITMB	EAST	9HEA	ATKR		
			9SCIE	KROE	9M53B	MCKD	9ENGE	ROBM	9PDHE	COOC	9RELE	BOUJ	9ISTA	WALJ	9ITMA	WILA		
			9SCIF	TAHM	9M52D	NAIJ	9ENGF	ANGK	9PDHF	STRH	9RELF	CULZ	9PASC	PEAR	9PASA	BOUJ		
			9SCIG	SEIM	9M52E	BU CJ	9ENGG	CUMB	9PDHG	THOC	9PDHG	KENS	9PAST	KILJ	9ITTA	MCGS		
			9SCIH	LALR	9M52F	LUIN	9ENGH	ATKR	9PDHH	THOC	9RELG	THOC	9ITTB	HALB	9STEA	ZAMN		
			9M52G	MEEC	9ENGI	QUIA					9RELH	HEAE	9MUSA	WILC	9FTCA	SHAN		
												9FTCB	MONN	9ITEA	GATJ			
Y8	PERIOD 1		PERIOD 2		PERIOD 3		PERIOD 4		PERIOD 5		PERIOD 6		PERIOD 7		PERIOD 8		PERIOD 9	
O I N N - D C U A C M P I U O N	9:00	9:35	9:35	10:10	10:10	10:45	11:05	11:40	11:40	12:15	12:15	12:50	1:15	1:50	1:50	2:25	2:25	3:00
	8ENGA	DALP	8RELA	DARM	8GEOA	HEAE	8JAPA	AMOD	8MATA	BU CJ	8MUSA	EDEV	8TASA	MCGS	8SCIA	KROE	8PDHA	JANB
	8ENGB	TORJ	8GEOB	QUIA	8SCIB	MONS	8ITAA	LAUL	8MATB	NAIJ	8VARA1	COLD	8TASB	WILA	8RELB	HICC	8PDHB	COOC
	8ENGC	QUIA	8SCIC	LALR	8JAPB	AMOD	8GEOC	SHAW	8MATC	MCKD	8VARA2	LEWS	8TASC	GATJ	8MUSB	HINL	8PDHC	VERJ
	8ENGD	ANGK	8GEOD	RAWB	8ITAB	BALU	8TASE	HALB	8MATD	PASJ	8RELC	TURM	8TASD	KROT	8VARB1	LEWS	8PDHD	CHUK
	8ENGE	DAYM					8TASF	WALJ	8MATI	AHEB	8RELD	HICC	8SCID	MONS	8VARB2	KNOJ		
			8RELE	TURM	8MATE	NAIJ	8ENGE	TORJ	8JAPC	AMOD	8PDHE	COOC	8MUSC	HINL	8GEOE	LAWD	8SCIE	SEIM
			8SCIF	MONS	8MATF	AHEB	8ENGF	QUIA	8TASH	GATJ	8GEOF	ROBM	8VARC1	KNOJ	8PDHF	COOC	8RELF	HINL
			8MUSD	WILC	8MATG	CHAA	8ENGG	CUMB	8SCIG	LALR	8TASI	HALB	8VARC2	THOC	8RELG	DARM	8PDHG	PEAR
			8VARD1	THOC	8MATF	PASJ	8ENGH	VRLD	8SCIH	WAYM	8TASJ	WALJ	8GEOG	QUIA	8GEOH	STRH	8PDHH	KILJ
		8VARD2	KNOJ	8MATJ	THOT					8TASK	MCGS	8ITAE	BALU					
Y7	PERIOD 1		PERIOD 2		PERIOD 3		PERIOD 4		PERIOD 5		PERIOD 6		PERIOD 7		PERIOD 8			
O I N N - D C U A C M P I U O N	9:00	9:40	9:40	10:20	10:20	11:00	11:20	12:00	12:00	12:40	12:40	1:20	1:40	2:20	2:20	3:00		
	7HISA	AHEB	7MATA	NAIJ	7SCIA	EDWF	7ENGA	AHEB	7TASA	MCGS	7PDHA	CHUK	7RELA	AHEB	7VARA	COLD		
	7HISB	SIMR	7MATB	GEEJ	7SCIB	MONS	7ENGB	SIMR	7TASB	KROT	7PDHB	KENS	7RELB	SIMR	7MUSA	WILC		
	7HISC	DSOD	7MATC	MCKD	7SCIC	LISD	7PDHC	BOUJ	7ENG C	DSOD	7TASC	MCGS	7RELC	DSOD	7VARB	THOC		
	7HISD	HALJ	7MATD	THOT	7SCID	TAHM	7TASD	MCGS	7ENG D	HALJ	7PDHD	VERJ	7RELD	HALJ	7MUSB	EDEV		
			7ENGE	ROBM	7SCIE	MONS	7MATE	MCKD	7HISIE	ROBM	7VARC	KNOJ	7PDHE	KILJ	7TASE	ZAMN		
			7HISF	CUMB	7SCIF	TAHM	7MATF	GEEJ	7PDHF	KENS	7MUSC	HINL	7ENGF	CUMB	7TASF	HALB		
			7ENGC	MCKJ	7SCIG	LISD	7MATG	NAIJ	7HISG	MCKJ	7RELG	MCKJ	7VARD	COLD	7TASG	GATJ		
			7ENGD	FOGB	7SCIH	WAYM	7RELB	WALJ	7HIS H	FOGB	7MATH	MCKD	7MUSD	HINL	7TASH	WILA		

Appendix C: Modified Bell Times

Week 3 – MODIFIED BELL TIMES MONDAY 11th May (Years 11 and 12)

INDUCTION	8:40 am	8:55 am
PERIOD 1	9:00 am	9:50 am
PERIOD 2	9:55 am	10:45 am
RECESS	10:45 am	11:05 am
PERIOD 3	11:10 am	12:00 pm
PERIOD 4	12:05 pm	12:55 pm
LUNCH	12:55 pm	1:15 pm
PERIOD 5	1:15 pm	2:05 pm
PERIOD 6	2:10 pm	3:00 pm

TUESDAY, WEDNESDAY & FRIDAY – 12th, 13th & 15th May (Years 10, 9 and 7)

INDUCTION	8:40 am	8:55 am
PERIOD 1	9:00 am	9:40 am
PERIOD 2	9:40 am	10:20 am
PERIOD 3	10:20 am	11:00 am
RECESS	11:00 am	11:20 am
PERIOD 4	11:20 am	12:00 pm
PERIOD 5	12:00 pm	12:40 pm
PERIOD 6	12:40 pm	1:20 pm
LUNCH	1:20 pm	1:40 pm
PERIOD 7	1:40 pm	2:20 pm
PERIOD 8	2:20 pm	3:00 pm

THURSDAY 14th May (Year 8)

INDUCTION	8:40 am	8:55 am
PERIOD 1	9:00 am	9:35 am
PERIOD 2	9:35 am	10:10 am
PERIOD 3	10:10 am	10:45 am
RECESS	10:45 am	11:05 am
PERIOD 4	11:05 am	11:40 am
PERIOD 5	11:40 am	12:15 pm
PERIOD 6	12:15 pm	12:50 pm
LUNCH	12:50 pm	1:10 pm
PERIOD 7	1:15 pm	1:50 pm
PERIOD 8	1:50 pm	2:25 pm
PERIOD 9	2:25 pm	3:00 pm